





Fast Facts

MAP LEGEND

-  Station Marker
-  Brightline West
-  Metrolink Regional Rail
-  Statelines



BRIGHTLINE WEST

3
full-service
stations.

Welcome aboard.

Brightline West will connect Las Vegas and Southern California with the first true high-speed passenger rail system in the nation. This 218-mile, all-electric high-speed rail service will feature three full-service stations: the Las Vegas station and the Victor Valley and Rancho Cucamonga stations in Southern California.



~2 hrs

travel time from
Las Vegas to Southern
California.



2x

faster than the normal
drive time.



200 mph

top speeds.

American Made

10,000+ union jobs during construction and
1,000 permanent operations and
maintenance jobs.

Faster

Significantly reduced travel time versus car
and air travel.

Greener

Reduction in 400,000+ metric tons of CO₂
each year.

1st true high-speed rail system in the United States.

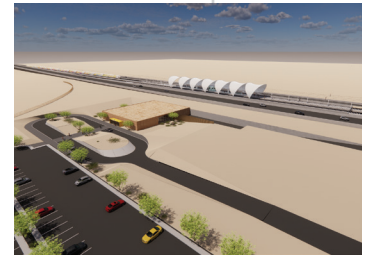
LAS VEGAS STATION



RANCHO CUCAMONGA STATION



VICTOR VALLEY STATION



DID YOU KNOW?

Our station in Rancho Cucamonga will be located directly adjacent to the existing Metrolink San Bernardino Line, allowing for a seamless link to Metrolink's regional service and ensuring car-free, care-free connectivity to downtown Los Angeles and beyond.

CURRENT PROJECTS

